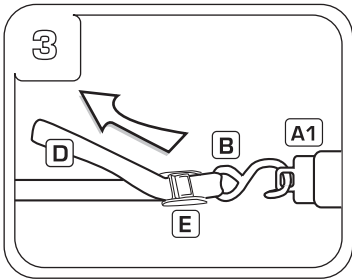
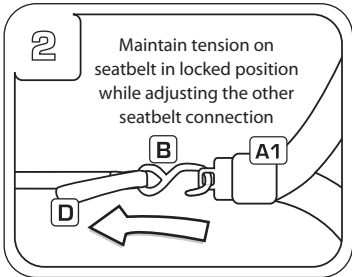
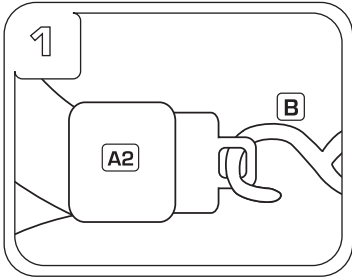
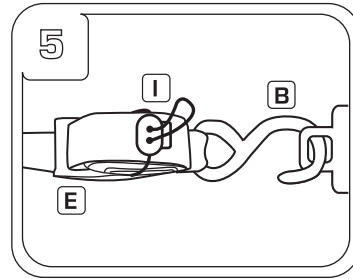
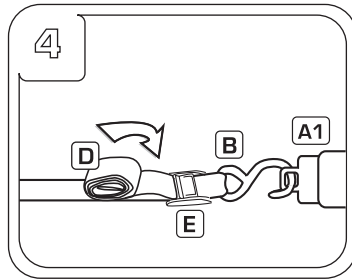


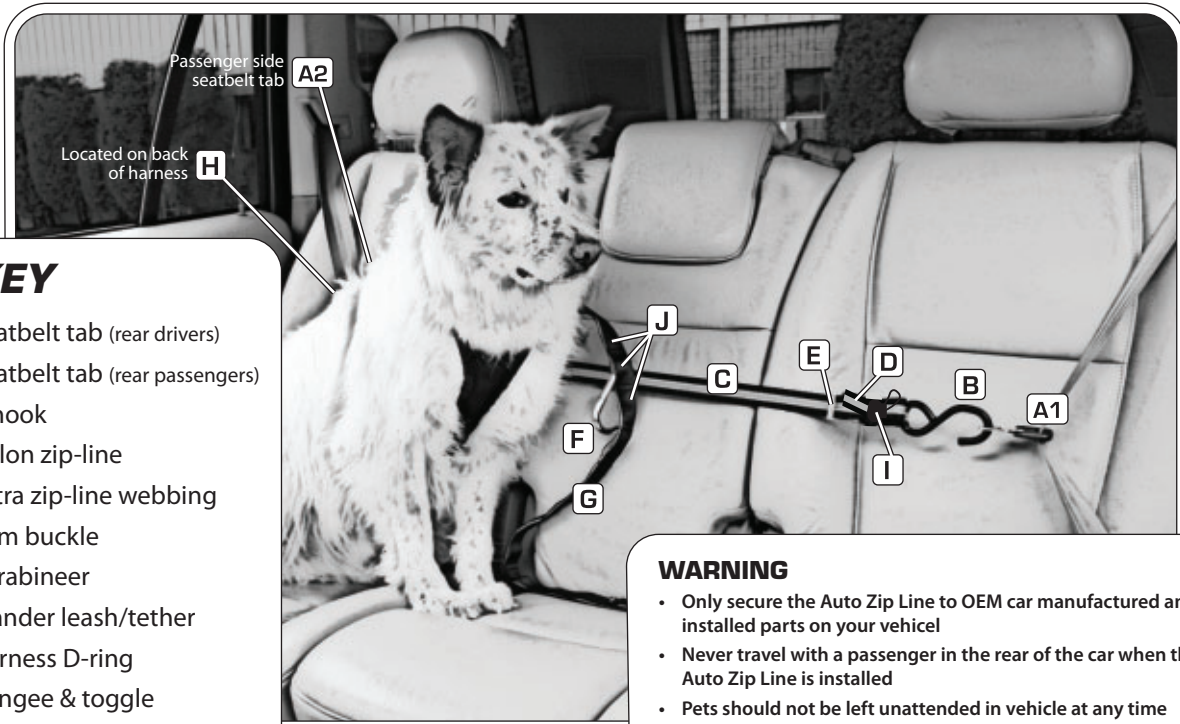
AUTO ZIP LINE - SEATBELT INSTALLATION INSTRUCTIONS



1. Hook the two s-hooks (B) onto the rear passenger seatbelt tabs (A1/A2) (See figure 1). The end of the zip line with the cam buckle (E) should be on the driver's side.
2. With your left hand, lock the rear driver's side seatbelt in place by swiftly pulling down on the seatbelt strap.
3. With right hand, grab extra zip line webbing (D) and apply constant pressure to the extra webbing to ensure that the seatbelt stays in the locked position. (see figure 2)
4. With left hand, reach over and lock the passenger seatbelt in position using the same swift pulling motion.
5. With the 2 seatbelts in the locked position pull on the extra zip line webbing in your right hand to remove all slack from the zip line. (See figure 3)
6. Roll up extra webbing (D) towards cam buckle (E) and secure using bungees & toggle system. (See figures 4 & 5).
7. Tug on each seatbelt before attaching the dog to ensure they are in the correct locked position. **(This should be done before each trip)**
8. Place Carbineer (F) onto zip-line (C).
9. Attach leash clip to harness D-ring (H).
10. Locate appropriate leash nook (J) that permits Fido to sit up and lay down and loop onto the carbineer (F).



More setup options on reverse side



KEY

- A1** Seatbelt tab (rear drivers)
- A2** Seatbelt tab (rear passengers)
- B** S-hook
- C** Nylon zip-line
- D** Extra zip-line webbing
- E** Cam buckle
- F** Carbineer
- G** Wander leash/tether
- H** Harness D-ring
- I** Bungee & toggle
- J** Leash nook

WARNING

- Only secure the Auto Zip Line to OEM car manufactured and installed parts on your vehicle!
- Never travel with a passenger in the rear of the car when the Auto Zip Line is installed
- Pets should not be left unattended in vehicle at any time
- Ensure proper installation of the Zip Line before each trip

AUTO ZIP LINE - ALTERNATE INSTALLATION OPTIONS



Passenger handle installation (fig. 1)

1. Place the two s-hooks onto the rear passenger handles.
2. Tighten the zip line by pulling the extra webbing through the cam buckle.
3. Roll up extra webbing toward cam buckle and secure using bungee & toggle setup.
4. Place carabineer onto zip line.
5. Attach leash clip to harness D-ring.
6. Locate appropriate leash nook that permits Fido to sit up and lay down and loop onto the carabineer.



Seatbelt installation (fig. 2)

1. Buckle seatbelt and attach the carabineer.
2. Locate appropriate leash nook that permits Fido to sit up and lay down and loop onto the carabineer.
3. Attach leash to D-ring on harness.



Cargo hook installation (fig. 3)

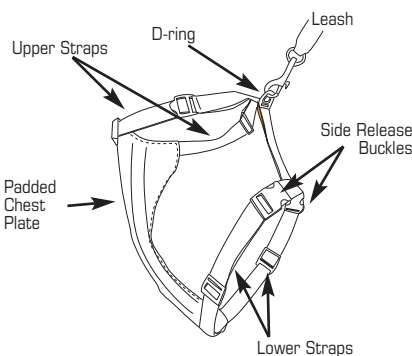
1. Attach carabineer to cargo hook.
2. Locate appropriate leash nook that permits Fido to sit up and lay down and loop onto the carabineer.
3. Attach leash to D-ring on harness.

Safety/walking harness instructions (fig. 4)

1. Place upper strap (with steel D-ring) around pet's neck.
2. Place 2 lower straps around pet's chest and behind front legs.
3. Fasten side release buckles on both sides.
4. Adjust upper and lower straps to fit comfortably and securely.



safety/walking harness parts



WASHING INSTRUCTIONS:

- Brush off loose dirt with a dry brush
- As needed, wipe off with a damp sponge and mild soap
- Rinse only, if possible. Use cold water and a sponge or rinse in a tub without soap
- Machine wash in front-loading unit (DO NOT use machine with agitator), with cold water and mild soap etc. Not detergents
- Rinse thoroughly to eliminate soap residue
- Lay flat to dry

